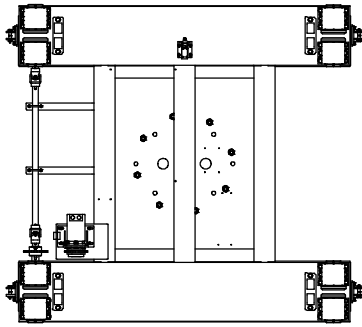


TROLLEY
(8505300)



ALL DIMENSIONS ARE NOMINAL
AND MAY VARY

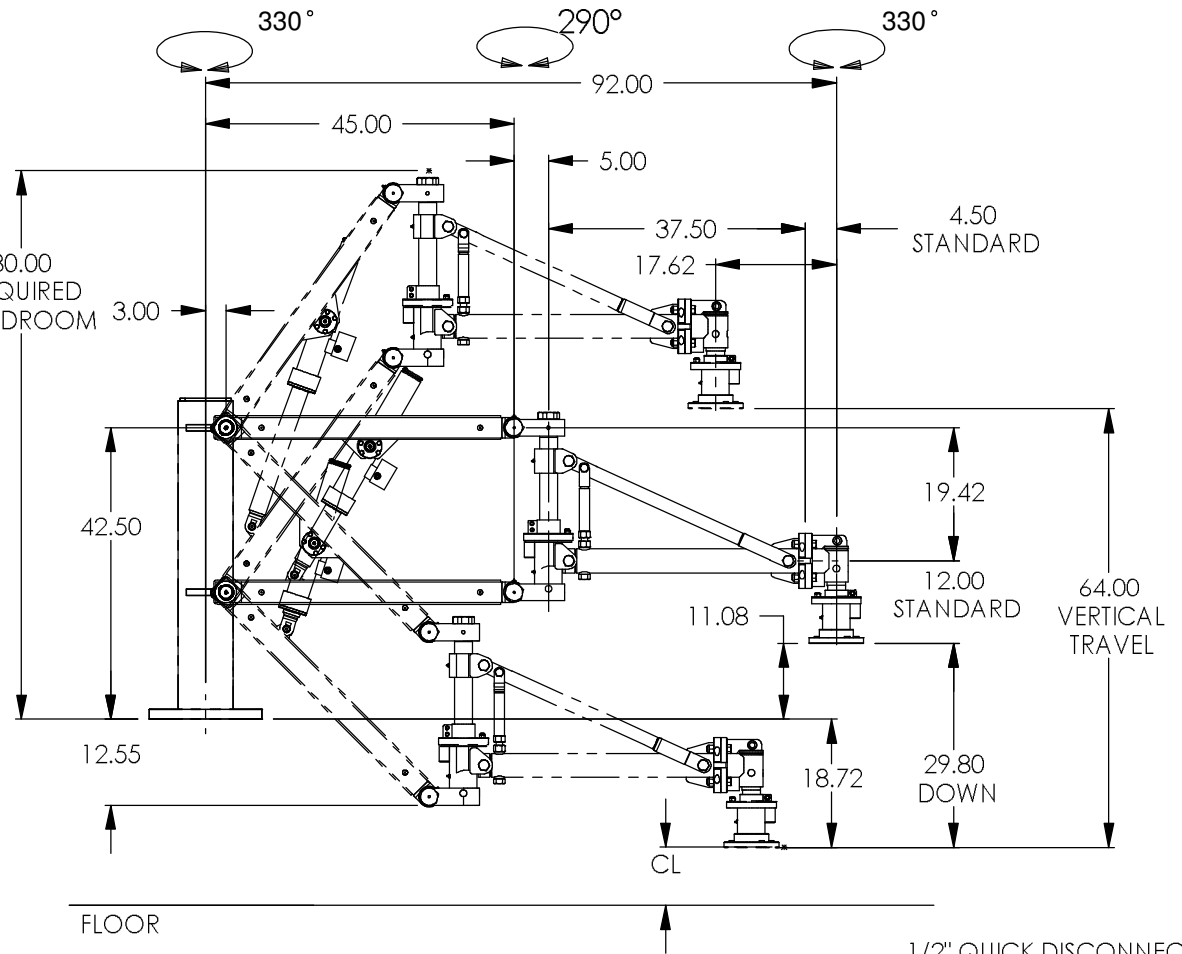
SPACER MOUNTING JACK
ASSEMBLY (9434106)

OVERHEAD SPACER
(200115800)

BEARING ASSY
200729025

PEDESTAL
(200115800)

PORTABLE BASE
(200206575)



1/2" QUICK DISCONNECT
AIR HOSE CONNECTION

Electrical Power	Amp Draw	Air Pressure for Rated Capacity (psi)	Maximum Allowable Air Pressure (psi)	Required SCFM	Reach (inches)	Vertical Travel (inches)	Required Headroom w/ CL=0 (inches)	Minimum Pedestal Length w/ CL=0 (inches)	Capacity (lbs)	Base Machine Weight (lbs)	Maximum End of Arm Moment (360 Rotation) (inch-lbs)	Middle Joint Moment (inch-lbs)	Base Machine Moment (inch-lbs)	Main Post Overturning Moment Capacity (inch-lbs)
480/60/1	12	80	100	5*	92	64	80	19	1000	1000	24,000	66,000	115,000	140,000

*Add SCFM consumed by any additional pneumatic equipment

UNLESS OTHERWISE SPECIFIED ALL DESIGNS, SKETCHES AND DRAWINGS ARE THE PROPERTY OF POSITECH CORPORATION LETTING, OR ALLOWING TO BE LET, THE KNOWLEDGE FOR DESIGN AND/OR FABRICATION FROM SAID DESIGNS, SKETCHES OR DRAWINGS WITHOUT THE WRITTEN CONSENT OF POSITECH CORPORATION IS EXPRESSLY FORBIDDEN.			
.X ± .1		BREAK ALL SHARP EDGES TO .005 MAX	
.XX ± .03		MATL:	PARTS TO BE MFG TO QWI-75-15
.XXX ± .005		DWG SIZE:	
1/X ± 1/32		WGT: 1020.522 LBS	
ANGLE ± .5°		SIM TO:	
WELD + 1/8		MQTY:	
- 0		MATL DESC:	



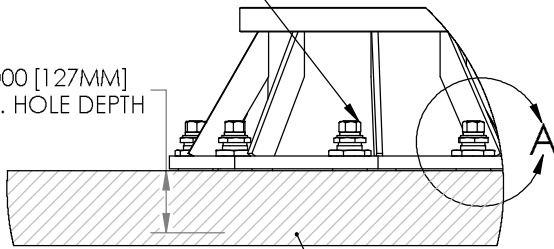
TPA-10

SCALE: 1:40	DATE: 3/2/2010	DRAWN BY:	
CLASS CODE: 500	DWG NO: TPA 10	SHT: 1 of 1	REV:

ADJUST LEVELING JACKS SO THE TOP OF THE PEDESTAL IS LEVEL. TIGHTEN HARDWARE. APPLY GROUT UNDER PEDESTAL IF DESIRED.

1"-8 ANCHOR BOLT, LEVELING JACKS AND HARDWARE SUPPLIED BY POSTTECH.

5.000 [127MM] MIN. HOLE DEPTH



MAIN POST CENTERLINE STANDARD ESTIMATED STATIC MOMENT FROM MACHINE, TOOLING, & PAYLOAD:

TPA - 10 - 175,000 IN LBS
TPA - 15 - 215,000 IN LBS

ESTIMATED STATIC WEIGHT BASED ON A 12 FT PEDESTAL.

TPA-10 - 3650 LBS
TPA-15 - 4350 LBS

FULLY REINFORCED CONCRETE WITH A MINIMUM STRENGTH OF 3500 PSI AND A MINIMUM DEPTH OF 6.00" FOR TPA-10/AJB-120/150 AND 8.00" FOR TPA-15/AJB-200. NO CRACKS ARE TO BE PRESENT WITHIN 60" OF PEDESTAL CENTERLINE.

ANCHOR BOLT INSTALLATION INSTRUCTIONS

1.) DRILL A HOLE PERPENDICULAR TO THE WORK SURFACE WITH A DIAMETER EQUAL TO THE ANCHOR DIAMETER. DRILL THE HOLE TO A DEPTH EXCEEDING MINIMUM EMBEDMENT (5.00" FOR 1"-8 ANCHOR). TO ENSURE FULL HOLDING POWER, IT IS ACCEPTABLE TO DRILL FULLY THROUGH THE CONCRETE TO ALLOW THE BOLTS TO BE LATER DRIVEN INTO THE EARTH SHOULD THE MACHINE BE MOVED IN THE FUTURE. DO NOT REAM THE HOLE OR ALLOW THE DRILL TO WOBBLE.

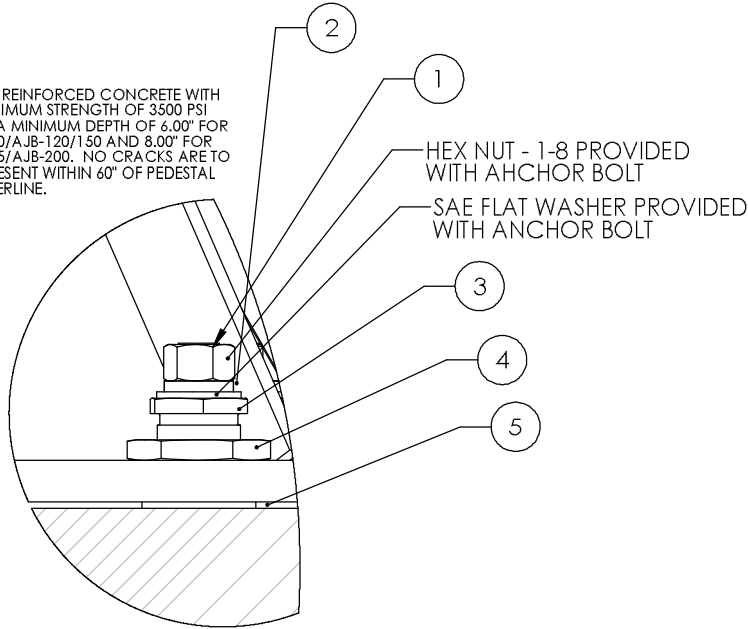
2.) CLEAN THE HOLE USING COMPRESSED AIR AND A NYLON BRUSH. A CLEAN HOLE IS NECESSARY FOR PROPER PERFORMANCE.

3.) ASSEMBLE A WASHER BETWEEN PEDESTAL SCREW JACK AND FLOOR.

4.) ASSEMBLE THE NUT ON THE ANCHOR SO THE NUT RESTS FLUSH TO JUST ABOVE THE TOP OF THE ANCHOR. PLACE ANCHOR IN HOLE. STRIKE SHARPLY WITH HAMMER TO DRIVE DOWN. FRICTION-FIT ANCHOR DESIGN MAY REQUIRE MORE FORCE THAN OTHER ANCHOR DESIGNS.

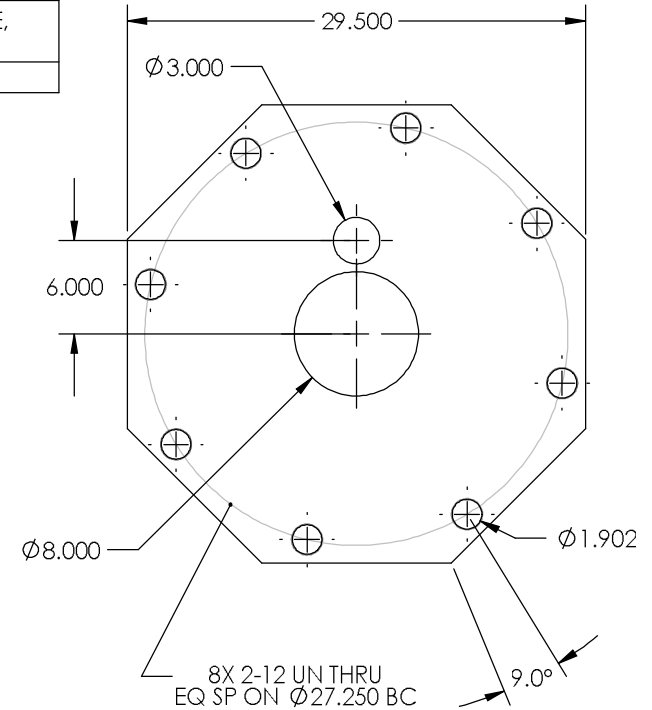
5.) TORQUE ANCHORS TO 250 FT-LBS.

6.) NOTE: THE DEEPER THE HOLE IS DRILLED, THE GREATER THE PULL OUT FORCE BECOMES. ANCHOR EMBEDMENT DEPTH NOT TO EXCEED 1 1/2 TIMES THE ANCHOR BOLT DIAMETER FROM THE OPPOSING FACE OF CONCRETE SLAB.



DETAIL A
SCALE 1 : 3

ITEM NO	QTY	PART NUMBER	DESCRIPTION
1	8	P000302	CONCRETE ANCH.BOLT,NUT&WASH.1" x 9
2	15	P000268	HLOCK 1.000PL
3	8	7822105	LEVELING JACK, TPA 10 & 15 - 2.0-12 X 2.250 X 1.188 ID
4	8	7827002	NUT - 2.0-12, JAM TYPE, LEVELING JACK
5	8	P000269	USS 1 1/8PL



A	ADDED ANCHOR BOLT DETAIL AND BOM		JAC	18JAN2005
REV.	DESCRIPTION		BY	DATE
MFG ROUTING	ALL DESIGNS, SKETCHES AND DRAWINGS ARE THE PROPERTY OF POSTTECH CORPORATION, LETTING, OR ALLOWING TO BE LET. THE KNOWLEDGE FOR DESIGN AND/OR FABRICATION FROM SAID DESIGNS, SKETCHES OR DRAWINGS WITHOUT THE WRITTEN CONSENT OF POSTTECH CORPORATION IS EXPRESSLY FORBIDDEN.			
ASSEMBLY				
DEBURR ALL SHARP EDGES	 LAURENS, IOWA 50554 PEDESTAL MTG. - TPA-10/15/AJB-120/150/200			
UNSPECIFIED TOLERANCES	FOR:			
XX ± .050	DWG B	SCALE: 1:10	DATE: 31-May-2001	DRAWN BY: JAC
XXX ± .030	CLASS CODE: 620	DWG. NO.: 200115502	REV: A	
ANGLE ± 5 DEG				