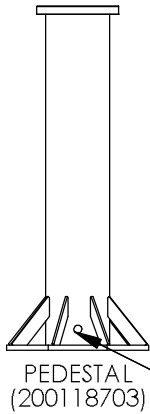


ALL DIMENSIONS ARE NOMINAL
AND MAY VARY



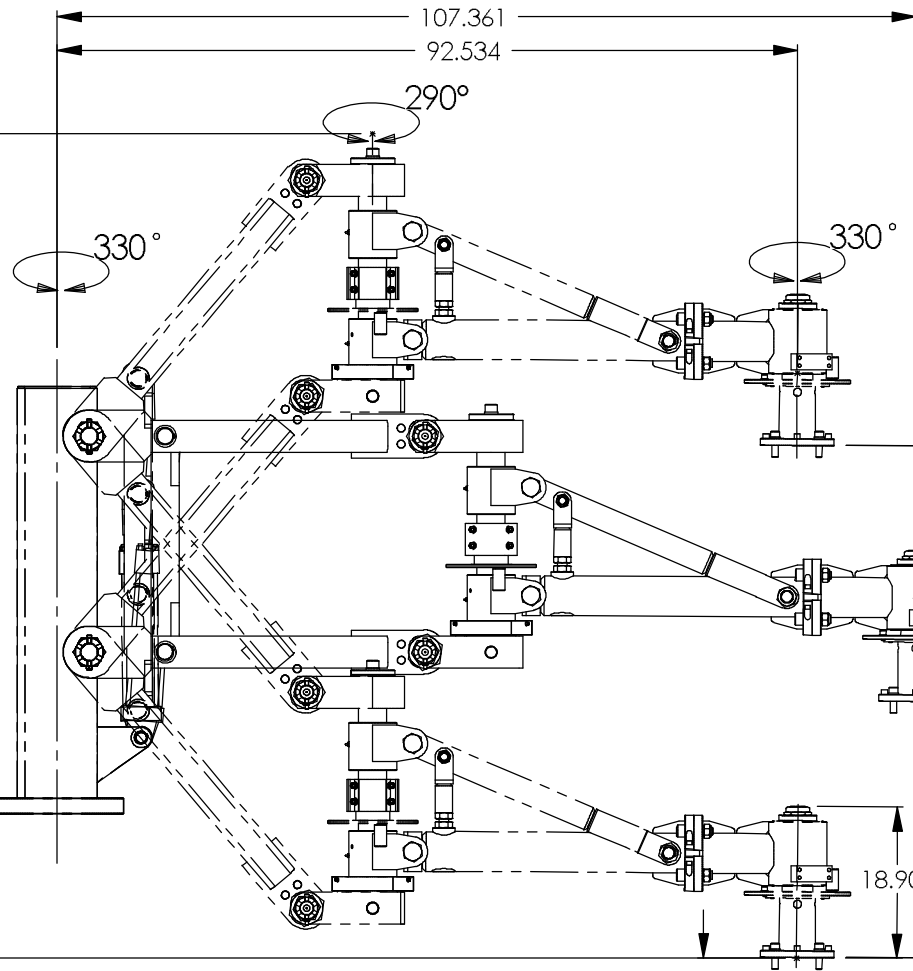
MOUNT WITH
LEVELING JACK
ASSEMBLY (200504001)
1" DIAMETER
ANCHOR BOLTS

AIR ACCESS

85.000
MINIMUM
OVERHEAD
CLEARANCE

18.070

FLOOR



Electrical Power	Amp Draw	Air Pressure for Rated Capacity (psi)	Maximum Allowable Air Pressure (psi)	Required SCFM	Reach (inches)	Vertical Travel (inches)	Required Headroom w/ CL=0 (inches)	Minimum Pedestal Length w/ CL=0 (inches)	Capacity (lbs)	Base Machine Weight (lbs)	Maximum End of Arm Moment (360° Rotation) (inch-lbs)	Middle Joint Moment (inch-lbs)	Base Machine Moment (inch-lbs)	Main Post Overturning Moment Capacity (inch-lbs)
480/60/1	12	80	100	5*	108	64	85	19	2500	2005	60,000	170,000	300,000	400,000

1/2" QUICK DISCONNECT AIR HOSE CONNECTION

* Add SCFM consumed by any additional pneumatic equipment

UNLESS OTHERWISE SPECIFIED			
ALL DESIGNS, SKETCHES AND DRAWINGS ARE THE PROPERTY OF POSITECH CORPORATION LETTING, OR ALLOWING TO BE LET, THE KNOWLEDGE FOR DESIGN AND/OR FABRICATION FROM SAID DESIGNS, SKETCHES OR DRAWINGS WITHOUT THE WRITTEN CONSENT OF POSITECH CORPORATION IS EXPRESSLY FORBIDDEN.			
.X ± .1	BREAK ALL SHARP EDGES TO .005 MAX		
.XX ± .03	DWG B	WGT: 1948.231 LBS	MATL:
.XXX ± .005	SIZE: B	SIM TO:	MQTY:
1/X ± 1/32	PARTS TO BE MFG TO QWI-75-15		
ANGLE ± .5°	MATL DESC:		
WELD + 1/8			
-0			



TPA-25

SCALE: 1:24	DATE: 9/18/2008	DRAWN BY: WAK	
CLASS CODE: 500	DWG NO: TPA 25	SHT: 1 of 1	REV:

ADJUST LEVELING JACKS SO THE TOP OF THE PEDESTAL IS LEVEL. TIGHTEN HARDWARE. APPLY GROUT UNDER PEDESTAL IF DESIRED.

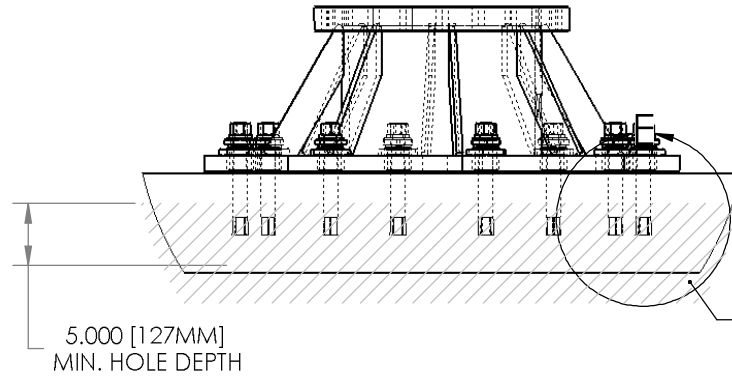
MAIN POST CENTERLINE
STANDARD ESTIMATED
STATIC MOMENT FROM
MACHINE, TOOLING,
& PAYLOAD:

TPA - 25 - 400,000 IN. LBS.

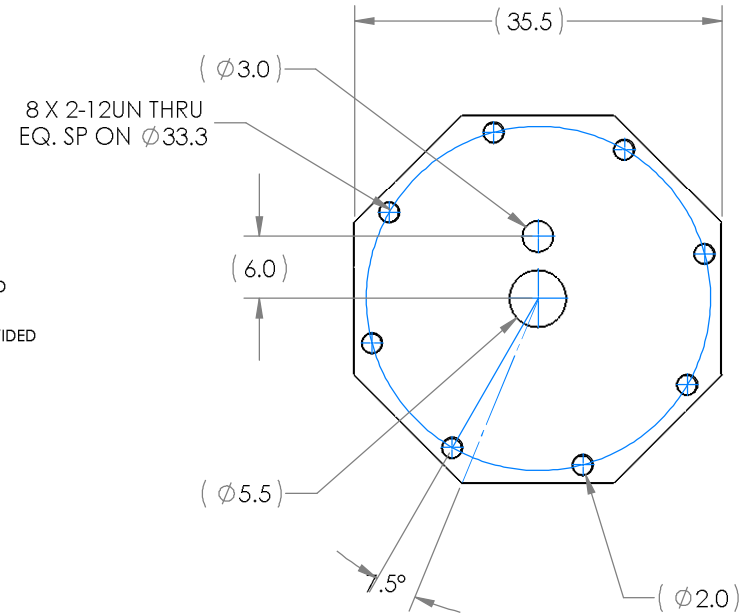
ESTIMATED STATIC WEIGHT
BASED ON A 12 FT PEDESTAL.

TPA-25 - 6500 LBS.

ITEM NO	QTY	PART NUMBER	DESCRIPTION
1	8	P000302	CONCRETE ANCH.BOLT,NUT&WASH.1" x 9
2	15	P000268	HLOCK 1.000PL
3	8	7822105	LEVELING JACK, TPA T0 & T5 - 2.0-12 X 2.250 X 1.188 ID
4	8	7827002	NUT - 2.0-12, JAM TYPE, LEVELING JACK
5	8	P000269	USS 1 1/8PL



FULLY REINFORCED CONCRETE WITH A MINIMUM STRENGTH OF 4000 PSI AND A MINIMUM DEPTH OF 8.000" FOR TPA-25 AND AJB-300. NO CRACKS ARE TO BE PRESENT WITHIN 11 FT. SQ. OF PEDESTAL CENTERLINE.



ANCHOR BOLT INSTALLATION INSTRUCTIONS

1.) DRILL A HOLE PERPENDICULAR TO THE WORK SURFACE WITH A DIAMETER EQUAL TO THE ANCHOR DIAMETER. DRILL THE HOLE TO A DEPTH EXCEEDING MINIMUM EMBEDMENT (5.00" FOR 1"-8 ANCHOR). TO ENSURE FULL HOLDING POWER. IT IS ACCEPTABLE TO DRILL FULLY THROUGH THE CONCRETE TO ALLOW THE BOLTS TO BE LATER DRIVEN INTO THE EARTH SHOULD THE MACHINE BE MOVED IN THE FUTURE. DO NOT REAM THE HOLE OR ALLOW THE DRILL TO WOBBLE.

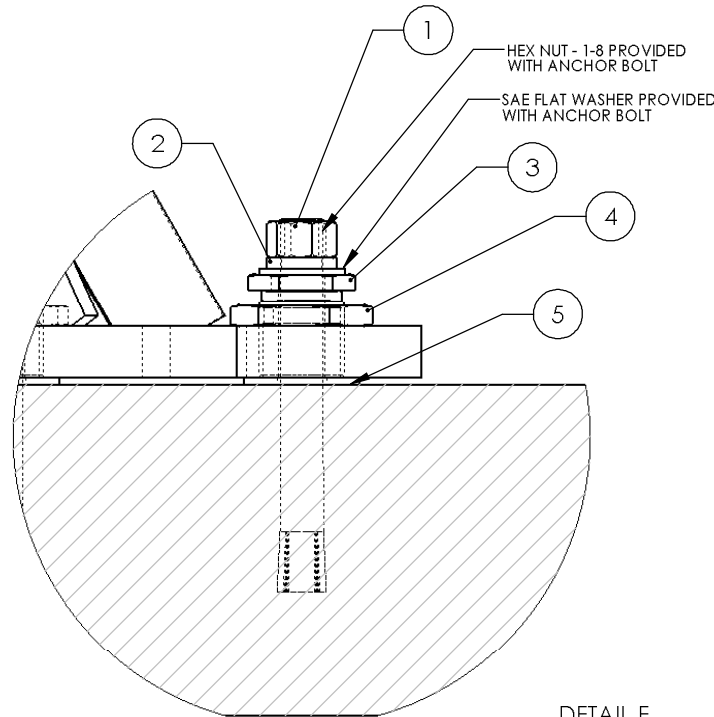
2.) CLEAN THE HOLE USING COMPRESSED AIR AND A NYLON BRUSH. A CLEAN HOLE IS NECESSARY FOR PROPER PERFORMANCE.

3.) ASSEMBLE A WASHER BETWEEN PEDESTAL SCREW JACK AND FLOOR.


4.) ASSEMBLE THE NUT ON THE ANCHOR SO THE NUT RESTS FLUSH TO JUST ABOVE THE TOP OF THE ANCHOR. PLACE ANCHOR IN HOLE. STRIKE SHARPLY WITH HAMMER TO DRIVE DOWN. FRICTION-FIT ANCHOR DESIGN MAY REQUIRE MORE FORCE THAN OTHER ANCHOR DESIGNS.

5.) TORQUE ANCHORS TO 250 FT-LBS.

6.) NOTE: THE DEEPER THE HOLE IS DRILLED, THE GREATER THE PULL OUT FORCE BECOMES. ANCHOR EMBEDMENT DEPTH NOT TO EXCEED 1 1/2 TIMES THE ANCHOR BOLT DIAMETER FROM THE OPPOSING FACE OF CONCRETE SLAB.



DETAIL E
SCALE 1 : 3

MFG ROUTING	ALL DESIGNS, SKETCHES AND DRAWINGS ARE THE PROPERTY OF POSTECH CORPORATION. LETTING, OR ALLOWING TO BE LET, THE KNOWLEDGE FOR DESIGN AND/OR FABRICATION FROM SAID DESIGNS, SKETCHES OR DRAWINGS WITHOUT THE WRITTEN CONSENT OF POSTECH CORPORATION IS EXPRESSLY FORBIDDEN.				
DEBURR ALL SHARP EDGES	 PEDESTAL MTG. - TPA-25/AJB-300				
UNSPECIFIED TOLERANCES	FOR:				
XX ± .050	DWG SIZE: B	SCALE: 1:10	DATE: 9FEB2005	DRAWN BY: JAC	
XXX ± .030	C CLASS CODE: 501	DWG. NO.: 200504001	REV:		
ANGLE ± 5 DEG					