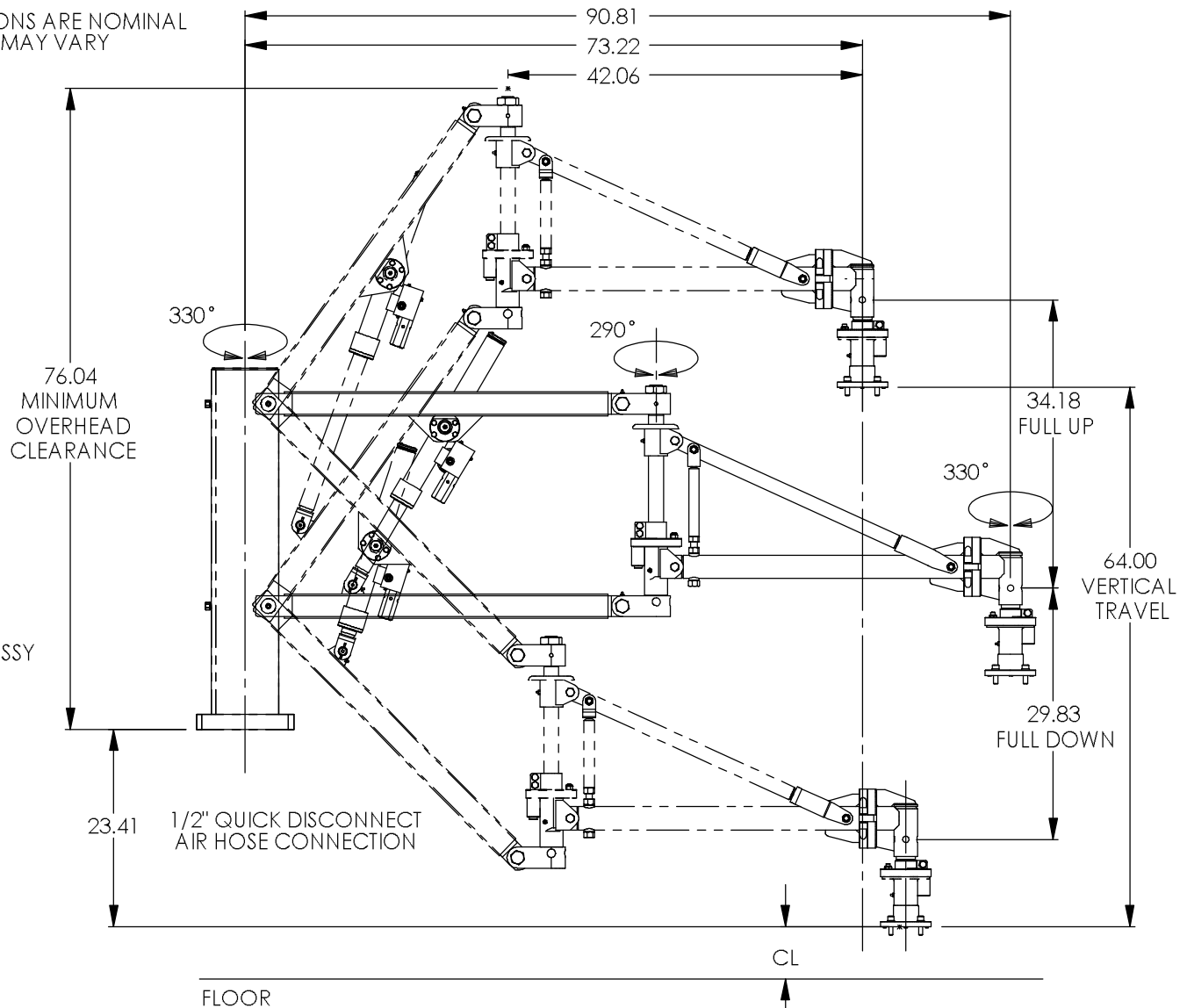
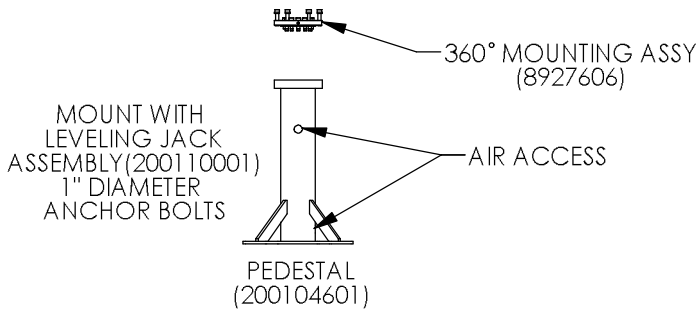
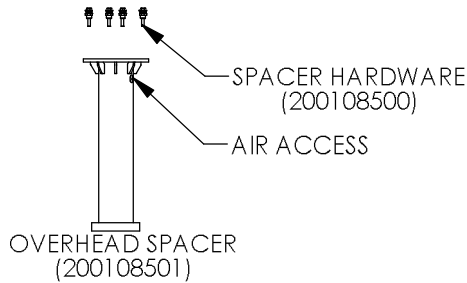


ALL DIMENSIONS ARE NOMINAL AND MAY VARY



Electrical Power	Amp Draw	Air Pressure for Rated Capacity (psi)	Maximum Allowable Air Pressure (psi)	Required SCFM	Reach (inches)	Vertical Travel (inches)	Required Headroom w/ CL=0 (inches)	Minimum Pedestal Length w/ CL=0 (inches)	Capacity (lbs)	Base Machine Weight (lbs)	Maximum End of Arm Moment (360 Rotation) (inch-lbs)	Middle Joint Moment (inch-lbs)	Base Machine Moment (inch-lbs)	Main Post Overturning Moment Capacity (inch-lbs)
480/60/1	12	80	100	5*	90	64	77	24	500	660	12,000	33,000	56,000	77,000

\*Add SCFM consumed by any additional pneumatic equipment

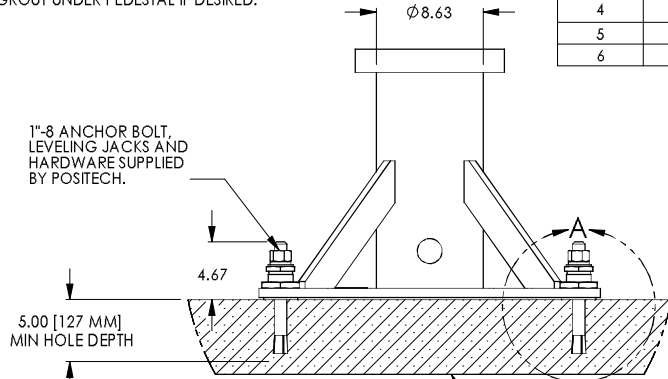
UNLESS OTHERWISE SPECIFIED ALL DESIGNS, SKETCHES AND DRAWINGS ARE THE PROPERTY OF POSITECH CORPORATION LETTING, OR ALLOWING TO BE LET, THE KNOWLEDGE FOR DESIGN AND/OR FABRICATION FROM SAID DESIGNS, SKETCHES OR DRAWINGS WITHOUT THE WRITTEN CONSENT OF POSITECH CORPORATION IS EXPRESSLY FORBIDDEN.			
BREAK ALL SHARP EDGES TO .005 MAX		MATL:	PARTS TO BE MFG TO QWI-75-15
DWG SIZE:	WGT: 423.915 LBS SIM TO: 200805321	MQTY:	
MATL DESC:			



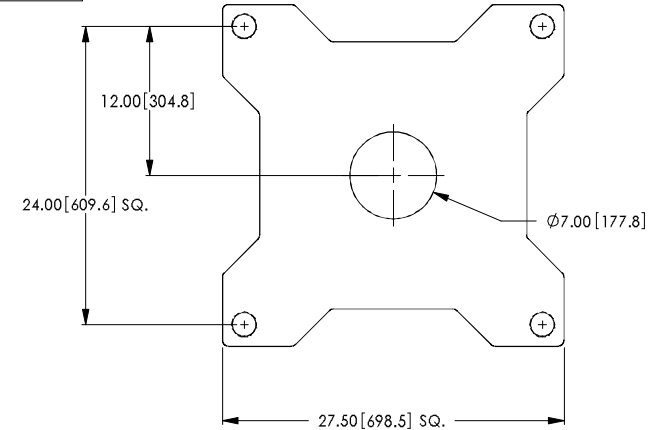
TPA 5

SCALE: 1:32	DATE: 18NOV03	DRAWN BY: JAS	
CLASS CODE: 737	DWG NO: 200332201	SHT: 1 of 1	REV:

ADJUST LEVELING JACKS SO THE TOP OF THE PEDESTAL IS LEVEL. TIGHTEN HARDWARE. APPLY GROUT UNDER PEDESTAL IF DESIRED.



ITEM NO	QTY	PART NUMBER	DESCRIPTION
1	4	P000302	CONCRETE ANCH.BOLT,NUT&WASH.1" x 9
2	4	P000268	HLOCK 1,000PL
3	4	7822105	LEVELING JACK - ST, 2-12 THRD X 2.250 L, 1.188 ID, TPA 10
4	4	7827002	LEVELING JACK NUT - 2-12 THRD, 3.00 HEX, .50 THK
5	4	P000269	USS 1 1/8PL
6	1	201015406	1" PEDESTAL ANCHOR INSTALL DECAL



FULLY REINFORCED CONCRETE WITH A MINIMUM STRENGTH OF 3500 PSI AND A MINIMUM DEPTH OF 6.00". NO CRACKS ARE TO BE PRESENT WITHIN 48" OF PEDESTAL CENTERLINE.

**ANCHOR BOLT INSTALLATION INSTRUCTIONS**

1.) DRILL A HOLE PERPENDICULAR TO THE WORK SURFACE WITH A DIAMETER EQUAL TO THE ANCHOR DIAMETER. DRILL THE HOLE TO A DEPTH EXCEEDING MINIMUM EMBEDMENT (5.00" FOR 1"-8 ANCHOR), TO ENSURE FULL HOLDING POWER. IT IS ACCEPTABLE TO DRILL FULLY THROUGH THE CONCRETE TO ALLOW THE BOLTS TO BE LATER DRIVEN INTO THE EARTH SHOULD THE MACHINE BE MOVED IN THE FUTURE. DO NOT REAM THE HOLE OR ALLOW THE DRILL TO WOBBLE.

2.) CLEAN THE HOLE USING COMPRESSED AIR AND A NYLON BRUSH. A CLEAN HOLE IS NECESSARY FOR PROPER PERFORMANCE.

3.) ASSEMBLE A WASHER BETWEEN PEDESTAL SCREW JACK AND FLOOR.

4.) ASSEMBLE THE NUT ON THE ANCHOR SO THE NUT RESTS FLUSH TO JUST ABOVE THE TOP OF THE ANCHOR. PLACE ANCHOR IN HOLE. STRIKE SHARPLY WITH HAMMER TO DRIVE DOWN. FRICTION-FIT ANCHOR DESIGN MAY REQUIRE MORE FORCE THAN OTHER ANCHOR DESIGNS.

5.) TORQUE ANCHORS TO 250 FT-LBS.

6.) NOTE: THE DEEPER THE HOLE IS DRILLED, THE GREATER THE PULL OUT FORCE BECOMES. ANCHOR EMBEDMENT DEPTH NOT TO EXCEED 1 1/2 TIMES THE ANCHOR BOLT DIAMETER FROM THE OPPOSING FACE OF CONCRETE SLAB.

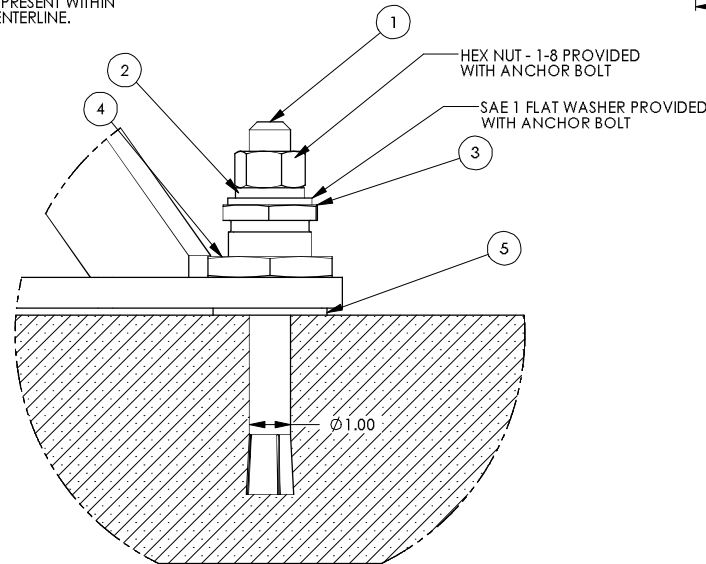
MAIN POST CENTERLINE  
MAXIMUM STATIC MOMENT  
FROM MACHINE, TOOLING,  
& PAYLOAD:

- SAM K - 65,000 IN LBS
- SAM P - 90,000 IN LBS
- SAM LS - 85,000 IN LBS
- TPA-5 - 80,000 IN LBS
- WM-200 - 100,000 IN LBS
- WM-300 - 120,000 IN LBS
- AJB-60 - 60,000 IN LBS
- AJB-90 - 90,000 IN LBS

MAXIMUM STATIC WEIGHT:

BASED ON A 12 FT PEDESTAL.  
ALL WEIGHTS ARE ESTIMATES.

- SAM K - 2615 LBS
- SAM P - 2765 LBS
- SAM LS - 1700 LBS
- TPA-5 - 2453 LBS
- WM-200 - 1830 LBS
- WM-300 - 2338 LBS



DETAIL A  
SCALE 1 : 3

STANDARD ASSYS:  
SAM P/K/LS/WM/TPA-5/AJB-60/90

B	OLD DWG NAME: PEDESTAL MTS - SAM P/K/LS/WM/TPA-5/AJB-60/90	WAK	11-Apr-2010
A	ADDED ANCHOR BOLT DETAIL VIEW AND BOM	JAC	12-JAN-2005
REV.	DESCRIPTION	BY	DATE

ALL DESIGNS, SKETCHES AND DRAWINGS ARE THE PROPERTY OF POSTTECH CORPORATION. LETTING, OR ALLOWING TO BE LET, THE KNOWLEDGE FOR DESIGN AND/OR FABRICATION FROM SAID DESIGNS, SKETCHES OR DRAWINGS WITHOUT THE WRITTEN CONSENT OF POSTTECH CORPORATION IS EXPRESSLY FORBIDDEN.



LEVELING JACK ASSY - CONCRETE MOUNTING,  
120,000 IN-LBS

FOR: SAM P/K/LS, WM, TPA-5, AJB-60/90

DWG SIZE: B	SCALE: 1:10	DATE: 21 APR 03	DRAWN BY: JAS
CLASS CODE: 730	DWG. NO.: 200110001	REV: B	